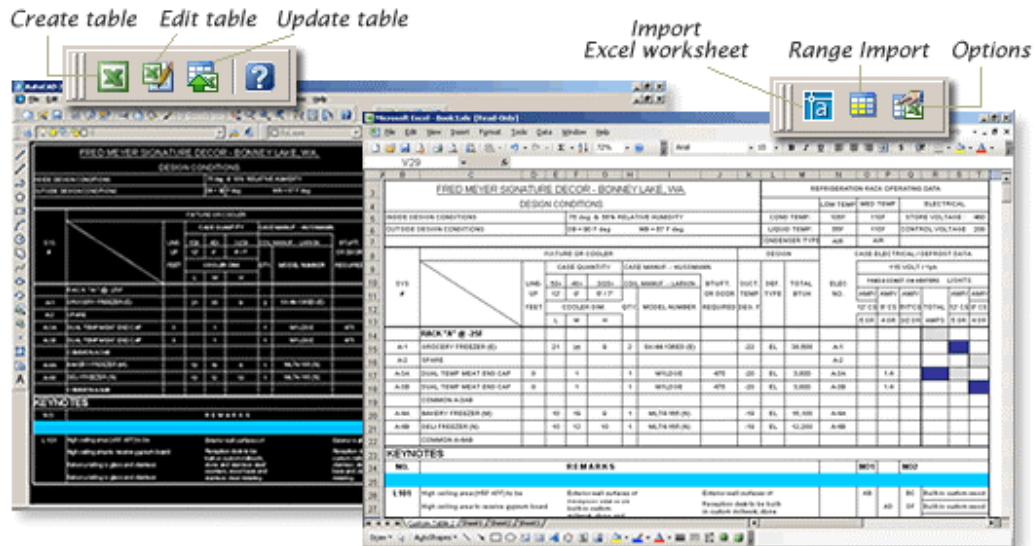


AutoTable Introduction



Introduction

AutoTable is designed to provide AutoCAD (LT)/MicroStation users a more convenient way working together with Excel. We then can import Excel spreadsheet into AutoCAD (LT)/MicroStation and modify it with Excel at anytime. Besides, you can update table to synchronize it with the original Excel spreadsheet.



Cadig AutoTable

Import Excel spreadsheets into AutoCAD (LT)/MicroStation and keep them updated.

What you see in Excel is what you get in AutoCAD (LT)/MicroStation

Creating BOM/Schedules/Parts Lists is now easy. <http://www.cadig.com>



Key Features

- Import Excel spreadsheets into AutoCAD (LT)/MicroStation and keep them updated.
- Be able to import part of an Excel spreadsheet.
- Import Excel spreadsheet as AutoCAD table.
- What you see in Excel is what you get in AutoCAD (LT)/MicroStation.
- Full control of font type/style/size/color.
- Support for Border style (double-line, dashed line, diagonal and etc)
- Vertical/Wrap text, merged cells, Center across selection.
- All elements of the imported table are AutoCAD (LT)/MicroStation Entities.
- Update table to its original Excel spreadsheet.
- Support for local area network (LAN).
- AutoTable can be plotted perfectly.
- More versatile Table Solutions. Ideal for:
 - Panel Schedules
 - Equipment Schedules
 - Room Finish Schedules
 - Door and Window Schedules
 - Bills of Materials (BOM)
 - Parts lists
 - Notes

More http://www.cadig.com/products/at_keyfeatures.php

System Requirements

CAD Platforms

- AutoCAD 2000/2002/2004/2005/2006 and AutoCAD based products, such as Architectural Desktop, Map, Building System and Mechanical
- AutoCAD LT 2000/2002/2004/2005/2006/2007
- MicroStation V8.0, V8.1, V8.5 2004 Edition, XM

Excel 2000/2002/2003

AutoTable Introduction



Unique Selling Points (USP)

- The fastest Excel to AutoCAD (LT)/MicroStation import tools in the world.
- Import Excel spreadsheet with One-Click button.
- Edit the imported table with Excel.
- Support for AutoCAD native table.
- Support for Unicode Encoding (Multi-language character sets, such as East Asian languages).
- Support for Cell shading & patterns.
- Support for Math symbols etc.
- Support for basic Excel AutoShapes (line, rectangle, oval, arrows and etc).
- Update all imported tables at one time.
- Import several spreadsheets from different worksheets within a workbook and keep them updated.

More http://www.cadig.com/products/at_unique.php

Compare similar products

http://www.cadig.com/products/at_comparison.pdf

Video Demo

<http://www.cadig.com/demo/at>

Benefits

- The most cost-effective Table Solutions
- Easy installation.
- Zero learning curve.
- Software is very stable.
- Faster apt-get upgrade than other similar tools.
- 30-day money back.

AutoTable Introduction

Key Features Details

Note: The following descriptions are also applicable to MicroStation.

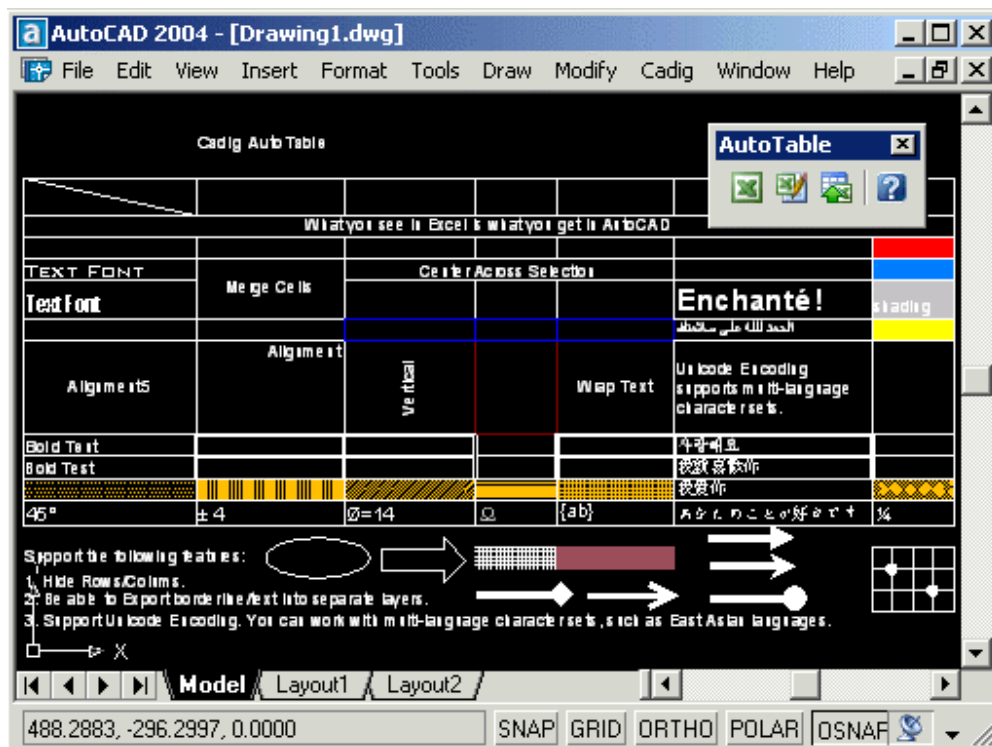
Range Import

Range Import gives users the flexibility to import part of an Excel worksheet. You can specify a range of cells for importing, then click Range Import button on the AutoTable toolbar in Excel.

What you see in Excel is what you get in AutoCAD.

The most accurate Excel to AutoCAD (LT)/MicroStation import tool in the world

- o Horizontal alignment - Left, Right and Center of the cell
- o Vertical alignment - Top, Bottom and Middle of the cell
- o Rotated upwards or downwards (90 or 270 degrees)
- o Vertical text
- o Wrap text
- o Merge cells
- o Center across selection
- o Support Math symbols etc
- o Cell shading & patterns
- o Basic Excel AutoShapes
- o Border style (dashed line, double-line and etc)
- o Text orientation



AutoTable Introduction

Full control of table setting.

Layer & Color | Scale | Object & Font Map | Other

Layer

Border: Text:

Shape: Image:

Border Color

By Layer

Convert to AutoCAD Color

By Border Lineweight

Thin: Red

Thick: Green

Text Color

By Layer

Convert to AutoCAD Color

By Font Style

Regular: Yellow

Bold: Blue

Layer & Color | Scale | Object & Font Map | Other

Cell Scale

Autofit cell to font height

Scale

Scale: 1:1

Custom: 1 drawing units = 1 Excel points

Text Height

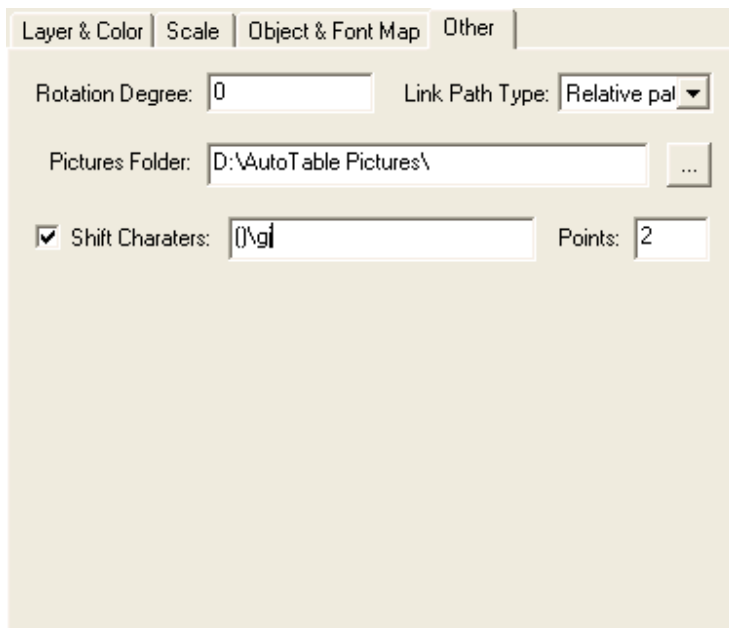
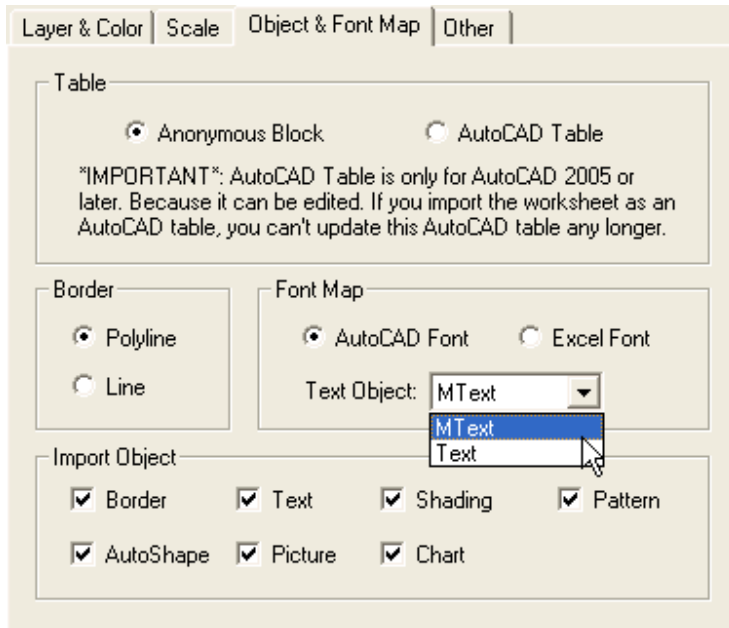
Autofit font height to cell

Scale

Scale: 1:8

Custom: 1 drawing units = 8 Excel font points

AutoTable Introduction



AutoTable Introduction

Support Local Area Network (LAN).

This means that one person (an engineer, for example) can use Excel to build an electrical panel schedule or a parts list and another person (an AutoCAD operator, for example) working in another room (or across town) can put the panel schedule or parts list on the drawing. The engineer does not need to know anything about AutoCAD or have access to AutoCAD and the CAD operator does not need to use Excel.



AutoTable Introduction

The fastest Excel to AutoCAD (LT)/MicroStation import tools in the world.

As we know each minute of engineers' time incurs cost to a project, so the import/update speed is critical. AutoTable can save you a lot of time.

AutoTable uses only 1/5~1/2 of the time used by other competitive tools to import/update Excel spreadsheets into AutoCAD. When you try to import/update a bigger complicated spreadsheet, it is far more efficient and effective than other similar tools.

You can do a test.

In all, AutoTable is slightly more expensive than other competitive tools, but in a long term it is more cost-effective.

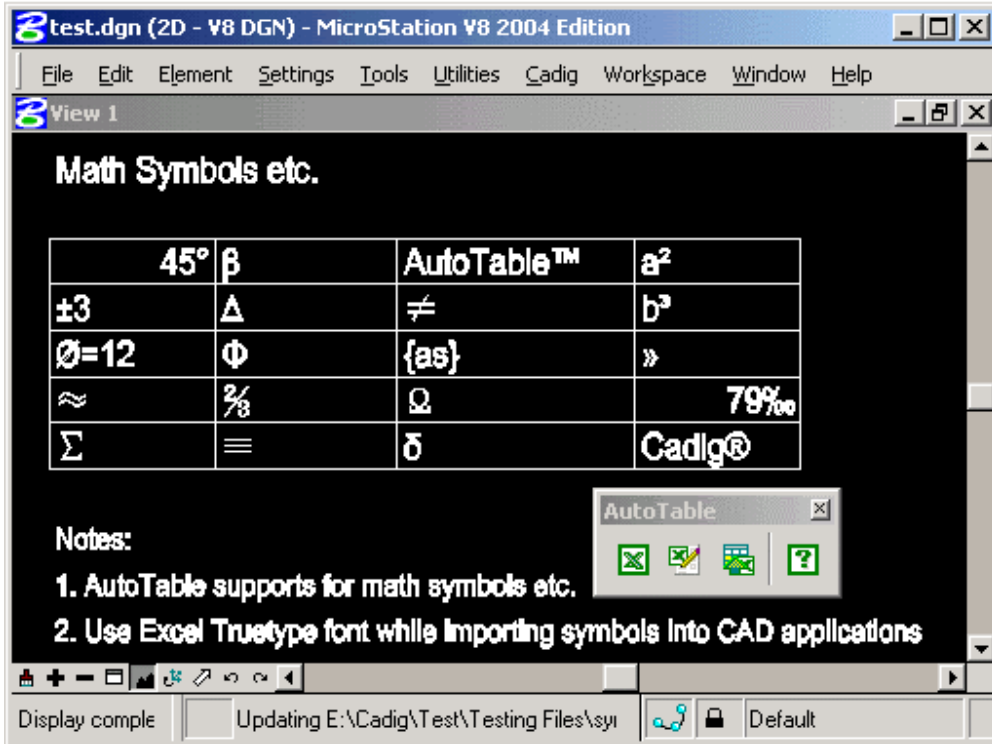
Support for Unicode Encoding

You can work with multi-language character sets, such as East Asian languages.



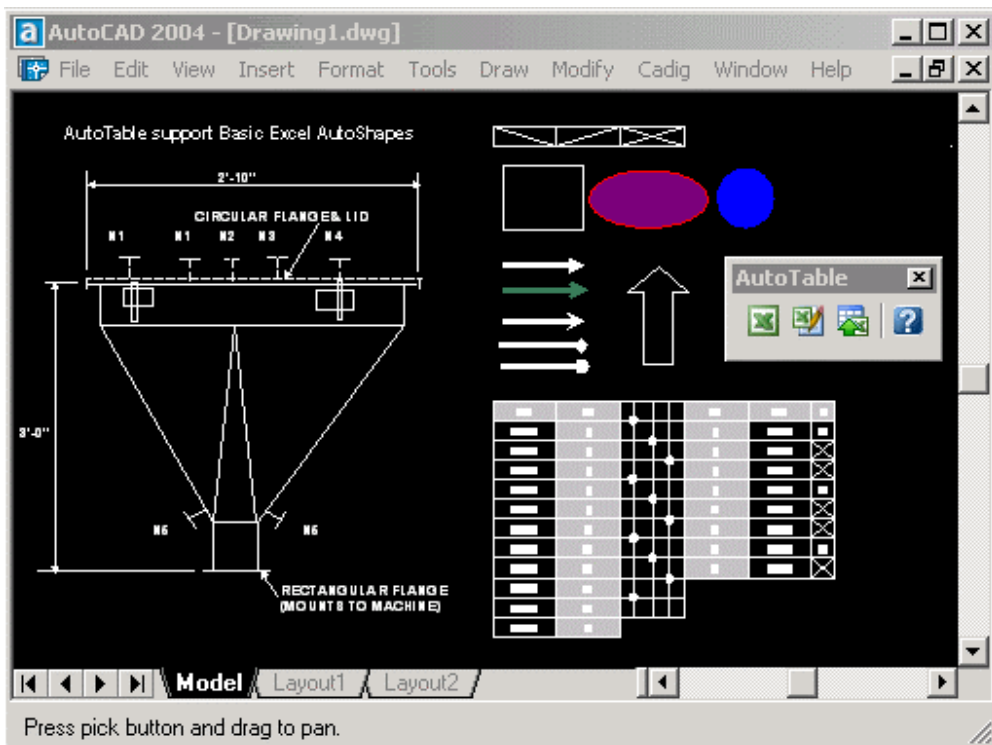
AutoTable Introduction

Support for Math symbols etc.



Support for basic Excel AutoShapes

Support for basic Excel AutoShapes such as line, circle, oval, rectangle, and arrows etc. Support for arrowheads on line shapes (open, stealth, triangle, diamond and oval).



Installation & Registration

How to install Cadig software?

1. Quit all programs, especially AutoCAD (LT)/MicroStation.
2. Double-click the installation application, such as AutoTable300forAutoCAD2005.exe.
3. Follow the instructions on the screen.
4. After the installation, you can run AutoCAD to use it.

If you have installed other Cadig series applications, the installation application will recognize default destination path and finish installation without any instructions.

I failed to install/load Cadig software. Why?

You must be "Administrator" to install and remove Cadig software. In Windows 2000/XP only "Power Users" & "Administrators" can use Cadig software.

How to register the Cadig software?

After you purchase the software, you will receive an email containing your License Certificate. The Certificate will contain your Product ID and Product Key.

The next step of the registration process is to authorize the software. This process will lock the software to an individual workstation.

To access the Registration screen:

1. On the **Cadig** menu in AutoCAD, point to **AutoTable**, click **Register**.
2. Enter your Product ID & Product Key in the registry window Click **OK** button.
3. The application would instruct you whether your registration is successful or not.
4. If failed, If failed, take note of the following:
 - - No mistype
 - - Make sure of no SPACEBAR BLANKS at the beginning/end
 - - Product ID/Key is case-sensitive
 - - Product ID/Key is related to your CAD platforms and versions
 - - Do not enter your Floating License Product ID/Key into Client software

After successful registration, all trial limitations would be immediately removed.

How to uninstall software?

1. Quit all programs, especially AutoCAD.
2. Double-click the **Add/Remove Programs** icon in the Windows Control Panel.
3. Click **Cadig AutoTable** in the **Currently installed program** box, and then click the **Change/Remove** button.
4. Follow the instructions on the screen.

AutoTable Introduction



Or

1. Quit all programs, especially AutoCAD.
2. Double-click the installation application, such as AutoTable300forAutoCAD2005.exe.
This installation application will automatically detect the corresponding application in local machine.
3. Follow the instructions on the screen to remove the software.

I uninstall Cadig software, however I still get a AutoCAD Message "Menu load failed. File not found:C:\Program Files\Common Files\Cadig\Cadig2005\Cadig2005.(mnu/mns/mnc)" when I run AutoCAD. How can I get rid of this?

This message will only occur the first time that AutoCAD has been run after uninstallation has taken place.